

KAHRMM

Kansas Association for Healthcare
Resource & Materials Management

Allied with the Kansas Hospital Association



2020 KAHRMM Board of Directors



Michael G. Morgan, CMRP
President

Term ends December 2021

Director, Materials Management
McPherson Hospital
1000 Hospital Dr
McPherson, KS 67460
michaelmorgan@mcphersonhospital.org
620.241.2251

KAHRMM President 2007,2012
Advisory Council
CPE Board

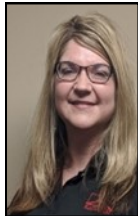


Craig Rohleder
Immediate Past President

Term ends December 2020

Director, Materials Management
Hays Medical Center
2220 Canterbury
Hays, KS 67601
craig.rohleder@haysmed.com
785.623.5838

KAHRMM President 2013,2019
Program and Education Committee Chair 2010-2012
Newsletter 2014, 2018-2019



Lori Knoeber, CMRP
President Elect

Term ends December 2022

Affiliate Resource Manager
Salina Regional Health Center
400 S Santa Fe
Salina, KS 67402
lknoeber@srhc.com
785.452.7497

KAHRMM Board Secretary 2018-19
AHRMM Membership Committee 2018-Present
AHRMM Membership Committee Chair 2019

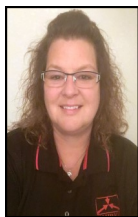


Teresa McHenry
NW District Representative

Term ends December 2020

Director, Materials Management
Ellsworth County Medical Center
1604 Aylward Ave
Ellsworth, KS 67439
tmchenry@ewmed.com
785.472.3111

KAHRMM Board Secretary-Present



Chrissy Fink, RN, CMRP
South Central District Representative

Term ends December 2022

Purchasing Coordinator
Salina Regional Health Center
400 S Santa Fe
Salina, KS 67401
cfink@srhc.com
785.452.7949

KAHRMM Board Treasurer 2012-Present
Finance Committee 2012-Present



Lisa Feil-Neavitt
North East District Representative

Term ends December 2022

Director, Materials Management
Atchison Hospital
800 Raven Hill Dr
Atchison, KS 66002
lfeil@atchhosp.org
913.360.5555

Program and Education Committee Chair 2017-Present



Mick Pond
South East District Representative

Term ends December 2021

Director, Materials Management
Wilson Medical Center
2600 Ottawa Rd
Neodesha, KS 66757
mpond@wmcrc.org
620.325.8367

Marketing Committee Chair 2017-Present



S. Patrick Tabor, FAHRMM, FACHE
South West District Representative

Term ends December 2021

Director, Materials Management
Lawrence Memorial Hospital
325 Main St
Lawrence, KS 66044
pat.tabor@lmh.org
785.505.6131

Finance Committee Chair-Present
AHRMM Fellows Committee Chair-Present
AHRMM Fellows Committee 2018-Present
KAHRMM President 2002, 2015
KAHRMM Board Treasurer 2006
Finance Committee
Nominating Committee



Tammy Jackson-Noland
North Central District Representative

Term ends December 2022
Director, Materials Management
Labette Health
1902 S US Hwy 59
Parsons, KS 67357
tjackson@labettehealth.com
620.820.5362

Program and Education Committee-Present



Larry Wenthe
Vendor Representative

Term ends December 2020
Sales Representative
Shared Services System
1725 S 20th St
Omaha, NE 68108
larry.wenthe@sharedomaha.com
785.392.7644

Special Projects Committee-Present



Bruce Frerking
KHA Alliance and Website Liaison

Director, Client Services
Associated Purchasing Services
7015 College Blvd, Ste 150
Overland Park, KS 66211
Bruce.frerking@apskc.org
913.327.8730

KHA Alliance Liaison 2003-Present

KAHRMM Advisory Council



Corey Schmidt, MBA, CMRP

ERP Project Implementation Lead, Supply Chain Administration
The University of Kansas Health System
2330 Shawnee Mission Parkway Ste 312
Westwood, KS 66205
cschmidt9@kumc.edu
913.588.9462

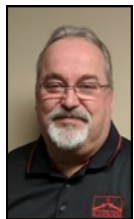
AHRMM Chapter Relations Committee Liaison to YPAC-Present
KAHRMM Board President 2018
KAHRMM Board Member 2016-2019



Cindy Howard-Reeves
KAHRMM Ambassador

Ulysses, KS 67880
cindyr@pld.com
620-353-4209

KAHRMM Chapter Ambassador 2019-Present
KAHRMM Board President 1992, 2000,2014
KAHRMM Board Secretary
KAHRMM District 6W Representative
AHRMM Chapter Executive Coordinator



Randy Lott

Executive Director of Affiliate Services
Salina Regional Health Center
400 S Santa Fe
Salina, KS 67401
rlott@srhc.com
785-488-7777

CPE Board and Vendor Chair 2019-Present
Special Projects Committee Co-Chair 2016-Present
KAHRMM Board President 2008
KAHRMM Board Secretary 2006
Program and Education Committee Chair



Dale Montgomery, FAHRMM

Principal
Montgomery Consulting
Hays, KS 67601
dmontgom67@yahoo.com
785-639-5618

Special Projects Committee Co-Chair-Present
KAHRMM Co-Founder 1979
KAHRMM Board President 1981,1990,2009
KAHRMM Board Member since 1979
CPE Co-Founder
CPE Board Member
Finance Committee and Chair
Program and Education Committee and Chair
Nominating Committee and Chair
Marketing Committee and Chair
Special Projects Committee and Chair
Golf Tournament Development Chair
Special Olympics Development Chair
AHRMM President
AHRMM Fellow
AHRMM George Gossett Awardee
Bellwether League Inductee



Rebecca Flora

Director of Materials Management
Phillips County Hospital
1150 State St
Phillipsburg, KS 67661
rflora@phillipshospital.org
785-635-2119

KAHRMM Board President 2016
KAHRMM Board Member 2011-2014